

County Profile Contact (919) 715-6374

Commerce Economic Development Contact (919) 733-4977

Demographics

Population & Growth

	Population	Annual Growth Rate
2015 Total Population	27,549	
2010 Census Total Population	27,798	0.4%
2000 Census Total Population	26,822	
July 2010 Certified Population Estimate	27,992	

Urban/Rural Representation

		Urban/Rural Percent
2000 Total Population: Urban - inside Urbanized Area	0	0.0%
2000 Total Population: Urban - inside Urbanized Clusters	3,342	12.5%
2000 Total Population: Rural - Farm	445	1.7%
2000 Total Population: Rural - Nonfarm	23,035	85.9%

Estimated Population by Age

		Pop by Age, % Est.
2015 Median Age	40	
2010 Median Age	39	
2000 Median Age	37	
2010 Total Pop 0-19	7,307	26.5%
2010 Total Pop 20-29	2,973	10.8%
2010 Total Pop 30-39	3,856	14.0%
2010 Total Pop 40-49	3,666	13.3%
2010 Total Pop 50-59	3,949	14.3%
2010 Total Pop 60+	5,821	21.1%

Working Commuters, 2000 Census

Workers, Travel Time

Avg Travel Time, Not at Home	25
Workers Not Working at Home	11,254
Travel Time to Work: < 5 minutes	434
Travel Time to Work: 5-9 minutes	1,627
Travel Time to Work: 10-14 minutes	1,752
Travel Time to Work: 15-19 minutes	1,802
Travel Time to Work: 20-24 minutes	1,529
Travel Time to Work: 25-29 minutes	463
Travel Time to Work: 30-34 minutes	1,479
Travel Time to Work: 35-39 minutes	302
Travel Time to Work: 40-44 minutes	289
Travel Time to Work: 45-59 minutes	659
Travel Time to Work: 60-89 minutes	618
Travel Time to Work: 90+ minutes	300

Workers, By Transportation

Worker Mode, Base	11,550
Work at Home	296
Drove Car/Truck/Van Alone	8,597
Carpooled Car/Truck/Van	2,366
Bus/Trolley Bus	35
Streetcar/Trolley Car	0
Subway/Elevated	0
Railroad	0
Ferryboat	0
Taxicab	0
Motorcycle	0
Bicycle	5
Walked	167
Other Means	84

Travel to Work

	Commuters	Percent by Residence
Worked in State/County of Residence	8,130	70.4%
Worked in State/Outside County of Residence	3,368	29.2%
Worked Outside State of Residence	52	0.5%

Education

Pop Age 25+, %

2010-11 Kindergarten-12th Enrollment	4,104	
2011 Average SAT score (2400 scale)	1,281	
2011 Percent of Graduates taking SAT	43.3%	
2009-10 Higher Education Completions	304	
2009-10 Higher Education Total Enrollment	1,849	
2010 Proj Education Attainment - At Least High School Graduate	13,796	72.9%
2010 Proj Education Attainment - At Least Bachelor`s Degree	2,410	12.7%

Housing

		Growth / Appreciation Est
2015 Total Housing	16,610	4.1%
2010 Total Housing	15,954	
2010 Census Total Housing	15,914	
2010 Census Occupied Housing	10,544	
2010 Census Vacant Housing	5,370	
2015 Median Value of Owner Occupied Housing	\$118,179	15.8%
2010 Median Value of Owner Occupied Housing	\$102,031	51.2%
2010 Owner Occupied Housing	7,960	
2010 Renter Occupied Housing	2,382	
2010 Total Households	10,342	
2000 Median Year Housing Structure Built	1980	

Income

		Growth Est or Total %/ Percent
2015 Median Family Income	\$52,951	9.0%
2010 Median Family Income	\$48,601	22.7%
2000 Median Family Income	\$39,601	
2015 Median Household Income	\$43,403	10.5%
2010 Median Household Income	\$39,273	19.4%
2000 Median Household Income	\$32,898	
2010 Median Disposable Income	\$32,166	
2010-2015 Per Capita Income: Annual Compound Growth Rate %		2.0%
2015 Per Capita Income	\$20,882	10.5%
2010 Per Capita Income	\$18,898	14.5%
2000 Per Capita Income	\$16,504	
2000 Total Pop with Income Below Poverty Level	3,957	
2000 Percent of Pop with Income Below Poverty Level		15.4%

Employment / Unemployment

	Year to Date	2010 Annual
2011Q3 Employment	9,143	9,488
2011Q3 Unemployment	1,332	1,368
2011Q3 Unemployment Rate	12.7%	12.6%
2011Q3 Announced Job Creation	71	.
2011Q3 Total Announced Investments (\$mil)	\$5.2	.
Sept2011YTD Lost Jobs, Closings & Layoffs	.	90
Sept2011YTD Establishment Events, Closings & Layoffs	0	2

Employment / Wages by Industry	2011 1st Qtr Employment	2010 Annual Employment	2011 1st Qtr Avg Weekly Wage	2010 Avg Weekly Wage
Total All Industries	8,555	8,468	\$571	\$583
Total Government	1,215	1,176	\$708	\$697
Total Private Industry	5,306	5,369	\$563	\$582
Agriculture Forestry Fishing & Hunting	0	0	.	.
Mining	0	0	.	.
Utilities	0	0	.	\$0
Construction	290	322	\$512	\$569
Manufacturing	2,934	2,828	\$584	\$600
Wholesale Trade	218	194	\$641	\$735
Retail Trade	795	789	\$426	\$442
Transportation and Warehousing	41	82	\$831	\$906
Information	0	0	.	.
Finance and Insurance	151	156	\$704	\$640
Real Estate and Rental and Leasing	17	20	\$239	\$243
Professional and Technical Services	123	147	\$423	\$638
Mgt of Companies, Enterprises	249	235	\$1,229	\$1,201
Administrative and Waste Services	107	209	\$659	\$570
Educational Services	753	707	\$707	\$686
Health Care and Social Assistance	0	0	.	.
Arts, Entertainment and Recreation	123	118	\$366	\$424
Accommodation and Food Services	297	309	\$207	\$214
Other Services Ex. Public Admin	0	0	.	.
Public Administration	421	429	\$699	\$696
Unclassified	0	0	\$0	.

Commercial/Retail/Industrial

Local Businesses

Dec2011 Available Industrial Buildings	6
2011Q1 Establishments: Total Private Industry	509
2011Q1 Establishments: Manufacturing	62

Local Retail Business

2010 Total Retail Sales (With Food/Drink) (\$mil)	\$182.9
2010 Total Retail Businesses (With Food/Drink)	223
2010 Avg Sales/Business Total (with Food/Drink)	\$820,270

Quality of Life

Taxes

FY2011-12 Property Tax Rate per \$100 Value	\$0.6700
FY2010-11 Annual Taxable Retail Sales (\$mil)	\$118.7
2012 Tier designation	1

Childcare

2011Q3 Licensed Child Care Facilities	21
2011Q3 Licensed Child Care Enrollment	705

Weather

Annual Rainfall	51
Annual Snowfall	6
Average Annual Temperature	58
Average Annual High Temperature	65
Average Annual Low Temperature	40

Healthcare Providers

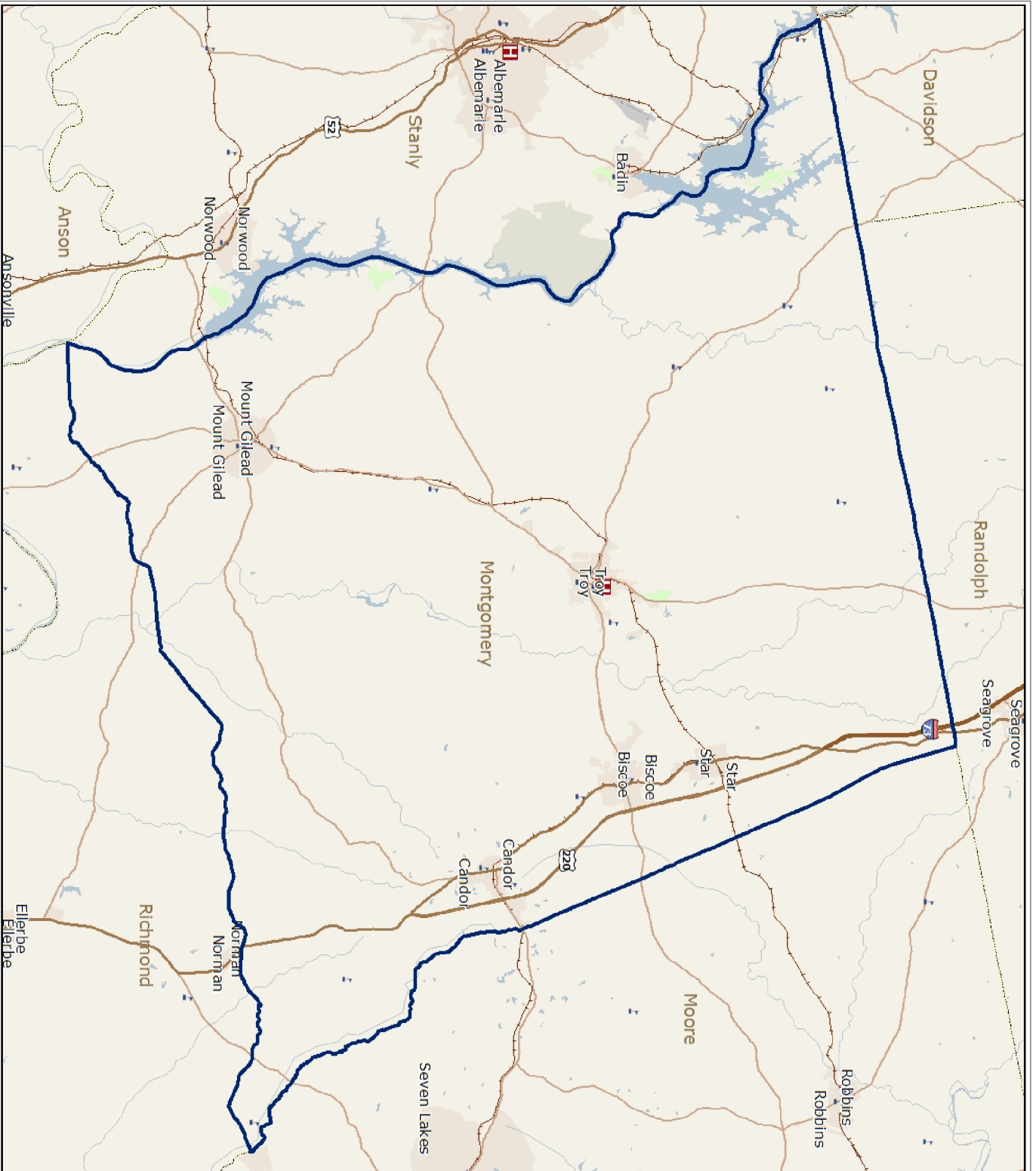
2010 Number of Physicians	7
2010 Physicians per 10,000 population	2.5
2010 RNs per 10,000 population	35.3
2010 Dentists per 10,000 population	1.1
2010 Pharmacists per 10,000 population	7.2

Sources:

ESRI for demographics, working population, educational attainment, housing, income, crime, weather, and retail data. <http://www.esri.com>
 NC Dept. of Education and various state education departments for SAT data by county system. <http://www.ncpublicschools.org>
 US Dept. of Education, National Center for Education Statistics for higher education data. <http://nces.ed.gov/ipeds/>
 NC Commerce, Labor and Economic Analysis Division, for announced new jobs and investment, NC tiers, and number of industrial buildings. <http://www.nccommerce.com/en>
 NC Commerce, Division of Employment Security for lost jobs and affected establishments data and occupational data. <http://www.ncesc.com>
 NC Dept. of Health & Human Services for childcare data. <http://www.ncdhhs.gov/>
 UNC Sheps Center for healthcare provider statistics. <http://www.shepscenter.unc.edu/>
 US Bureau of Labor Statistics for employment and unemployment, wages and establishments by industry. <http://www.bls.gov>

Notes:

Data are the latest available at the date the profile was prepared. SAT scores use the new scoring system including a writing test for a perfect score of 2400 and represent county systems. ESRI 2010/2015 data are projections. Some data may be available only for North Carolina. For further details or questions, please check the Data Sources Guide at https://edis.commerce.state.nc.us/docs/bibliography/Data_Sources_Guide.pdf.



Prepared by North Carolina Department of Commerce,
Division of Policy, Research & Strategic Planning, December 2010

Legend

- Hospital
- Public University
- Private University
- NC Community Colleges
- School
- Interstate
- US Highway
- State Highway
- Railroads (Local)
- Airport
- Rivers
- County Bnds (detailed, named)
- Park
- Municipal Boundaries

