

# Alamance County (NC)

## December 2011

T H R I V E  
in NORTH  
CAROLINA

County Profile Contact (919) 715-6374

Commerce Economic Development Contact (919) 733-4977

### Demographics

#### Population & Growth

	Population	Annual Growth Rate
2015 Total Population	161,508	
2010 Census Total Population	151,131	1.6%
2000 Census Total Population	130,800	
July 2010 Certified Population Estimate	151,745	

#### Urban/Rural Representation

	Population	Urban/Rural Percent
2000 Total Population: Urban - inside Urbanized Area	90,615	69.3%
2000 Total Population: Urban - inside Urbanized Clusters	0	0.0%
2000 Total Population: Rural - Farm	1,025	0.8%
2000 Total Population: Rural - Nonfarm	39,160	29.9%

#### Estimated Population by Age

	Population	Pop by Age, % Est.
2015 Median Age	40	
2010 Median Age	39	
2000 Median Age	36	
2010 Total Pop 0-19	39,372	26.2%
2010 Total Pop 20-29	18,358	12.2%
2010 Total Pop 30-39	19,887	13.2%
2010 Total Pop 40-49	22,364	14.9%
2010 Total Pop 50-59	20,805	13.8%
2010 Total Pop 60+	29,569	19.7%

### Working Commuters, 2000 Census

#### Workers, Travel Time

Avg Travel Time, Not at Home	22
Workers Not Working at Home	62,458
Travel Time to Work: < 5 minutes	2,049
Travel Time to Work: 5-9 minutes	8,154
Travel Time to Work: 10-14 minutes	11,885
Travel Time to Work: 15-19 minutes	12,009
Travel Time to Work: 20-24 minutes	9,048
Travel Time to Work: 25-29 minutes	3,190
Travel Time to Work: 30-34 minutes	6,852
Travel Time to Work: 35-39 minutes	1,436
Travel Time to Work: 40-44 minutes	1,724
Travel Time to Work: 45-59 minutes	3,589
Travel Time to Work: 60-89 minutes	1,534
Travel Time to Work: 90+ minutes	988

#### Workers, By Transportation

Worker Mode, Base	63,698
Work at Home	1,240
Drove Car/Truck/Van Alone	51,929
Carpooled Car/Truck/Van	8,986
Bus/Trolley Bus	55
Streetcar/Trolley Car	5
Subway/Elevated	6
Railroad	0
Ferryboat	0
Taxicab	29
Motorcycle	25
Bicycle	68
Walked	855
Other Means	500

#### Travel to Work

	Commuters	Percent by Residence
Worked in State/County of Residence	47,734	74.9%
Worked in State/Outside County of Residence	15,563	24.4%
Worked Outside State of Residence	401	0.6%

### Education

**Pop Age 25+, %**

2010-11 Kindergarten-12th Enrollment	23,319	
2011 Average SAT score (2400 scale)	1,418	
2011 Percent of Graduates taking SAT	61.6%	
2009-10 Higher Education Completions	2,321	
2009-10 Higher Education Total Enrollment	13,703	
2010 Proj Education Attainment - At Least High School Graduate	84,289	83.3%
2010 Proj Education Attainment - At Least Bachelor`s Degree	23,227	23.0%

**Housing**

		<b>Growth / Appreciation Est</b>
2015 Total Housing	71,759	8.6%
2010 Total Housing	66,061	
2010 Census Total Housing	66,576	
2010 Census Occupied Housing	59,960	
2010 Census Vacant Housing	6,616	
2015 Median Value of Owner Occupied Housing	\$117,699	8.4%
2010 Median Value of Owner Occupied Housing	\$108,553	12.8%
2010 Owner Occupied Housing	42,304	
2010 Renter Occupied Housing	17,918	
2010 Total Households	60,222	
2000 Median Year Housing Structure Built	1974	

**Income**

		<b>Growth Est or Total %/ Percent</b>
2015 Median Family Income	\$65,872	10.0%
2010 Median Family Income	\$59,910	28.5%
2000 Median Family Income	\$46,620	
2015 Median Household Income	\$55,855	12.0%
2010 Median Household Income	\$49,882	27.6%
2000 Median Household Income	\$39,097	
2010 Median Disposable Income	\$39,117	
2010-2015 Per Capita Income: Annual Compound Growth Rate %		2.0%
2015 Per Capita Income	\$26,106	10.2%
2010 Per Capita Income	\$23,680	22.1%
2000 Per Capita Income	\$19,391	
2000 Total Pop with Income Below Poverty Level	14,183	
2000 Percent of Pop with Income Below Poverty Level		11.1%

**Employment / Unemployment**

	<b>Year to Date</b>	<b>2010 Annual</b>
2011Q3 Employment	62,337	61,969
2011Q3 Unemployment	7,490	7,971
2011Q3 Unemployment Rate	10.7%	11.4%
2011Q3 Announced Job Creation	55	95
2011Q3 Total Announced Investments (\$mil)	\$0.0	\$36.2
Sept2011YTD Lost Jobs, Closings & Layoffs	14	182
Sept2011YTD Establishment Events, Closings & Layoffs	5	31

<b>Employment / Wages by Industry</b>	<b>2011 1st Qtr Employment</b>	<b>2010 Annual Employment</b>	<b>2011 1st Qtr Avg Weekly Wage</b>	<b>2010 Avg Weekly Wage</b>
Total All Industries	55,773	54,864	\$650	\$655
Total Government	6,269	6,252	\$673	\$686
Total Private Industry	48,804	47,921	\$649	\$652
Agriculture Forestry	61	66	\$460	\$426
Fishing & Hunting				
Mining	49	41	\$605	\$746
Utilities	99	98	\$1,483	\$1,272
Construction	2,350	2,564	\$612	\$662
Manufacturing	8,577	8,461	\$785	\$798
Wholesale Trade	2,165	2,180	\$917	\$860
Retail Trade	7,672	7,383	\$411	\$422
Transportation and Warehousing	1,147	1,118	\$687	\$755
Information	462	478	\$623	\$668
Finance and Insurance	1,280	1,284	\$970	\$938
Real Estate and Rental and Leasing	441	430	\$939	\$691
Professional and Technical Services	1,282	1,170	\$709	\$887
Mgt of Companies, Enterprises	2,002	2,329	\$1,290	\$1,107
Administrative and Waste Services	3,763	2,939	\$422	\$469
Educational Services	5,087	5,010	\$738	\$737
Health Care and Social Assistance	8,136	8,079	\$822	\$777
Arts, Entertainment and Recreation	615	659	\$244	\$343
Accommodation and Food Services	5,980	5,938	\$260	\$263
Other Services Ex. Public Admin	1,304	1,281	\$527	\$527
Public Administration	2,602	2,661	\$656	\$686
Unclassified	0	4	\$0	\$1,037

## Commercial/Retail/Industrial

### Local Businesses

Dec2011 Available Industrial Buildings	39
2011Q1 Establishments: Total Private Industry	3,290
2011Q1 Establishments: Manufacturing	228

### Local Retail Business

2010 Total Retail Sales (With Food/Drink) (\$mil)	\$1,428.0
2010 Total Retail Businesses (With Food/Drink)	1,211
2010 Avg Sales/Business Total (with Food/Drink)	\$1,179,218

## Quality of Life

### Taxes

FY2011-12 Property Tax Rate per \$100 Value	\$0.5200
FY2010-11 Annual Taxable Retail Sales (\$mil)	\$1,513.5
2012 Tier designation	2

### Childcare

2011Q3 Licensed Child Care Facilities	100
2011Q3 Licensed Child Care Enrollment	3,696

### Weather

Annual Rainfall	53
Annual Snowfall	9
Average Annual Temperature	60
Average Annual High Temperature	64
Average Annual Low Temperature	44

### Healthcare Providers

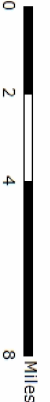
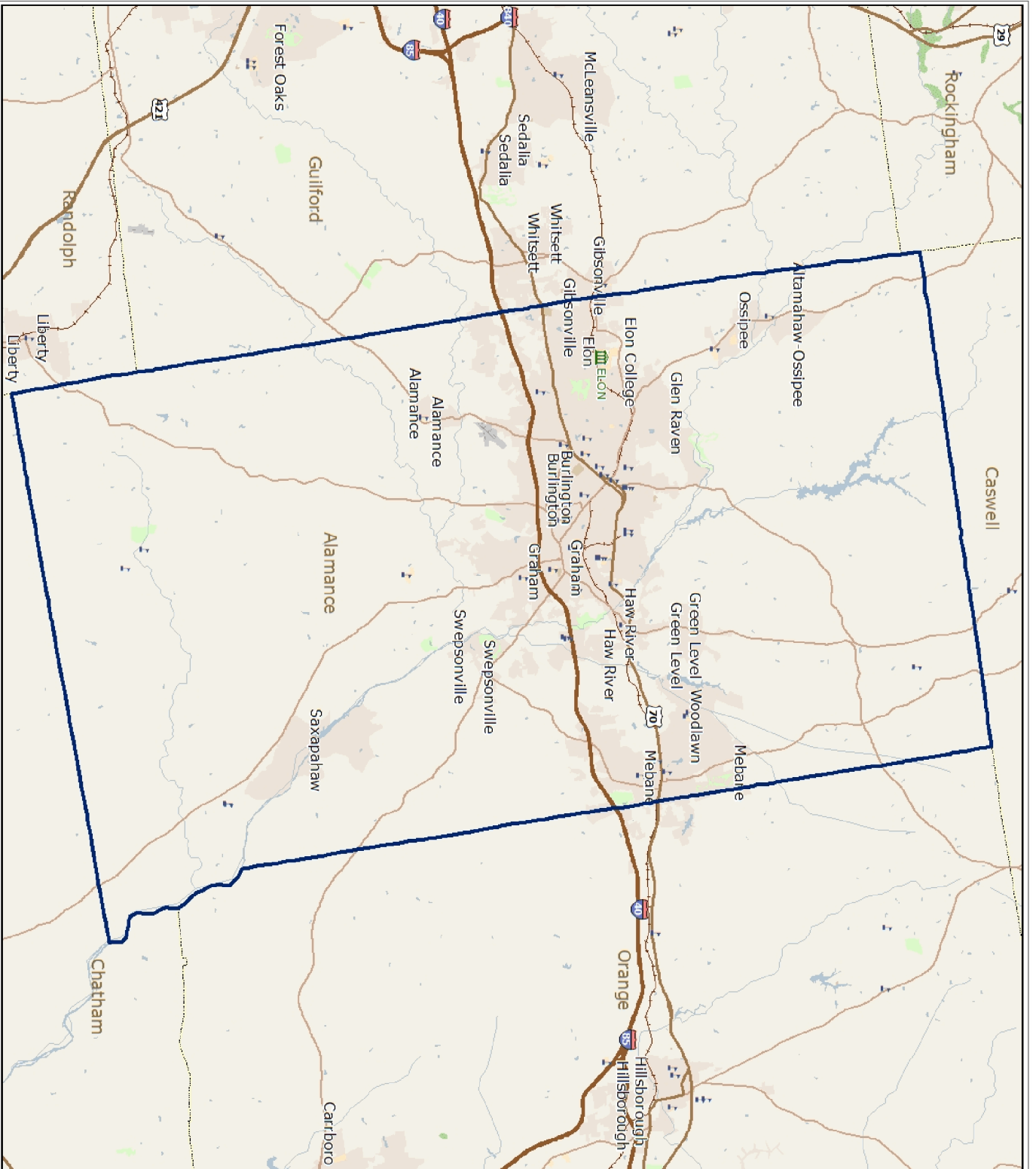
2010 Number of Physicians	251
2010 Physicians per 10,000 population	16.5
2010 RNs per 10,000 population	69.5
2010 Dentists per 10,000 population	4.2
2010 Pharmacists per 10,000 population	8.0

### Sources:

ESRI for demographics, working population, educational attainment, housing, income, crime, weather, and retail data. <http://www.esri.com>  
 NC Dept. of Education and various state education departments for SAT data by county system. <http://www.ncpublicschools.org>  
 US Dept. of Education, National Center for Education Statistics for higher education data. <http://nces.ed.gov/ipeds/>  
 NC Commerce, Labor and Economic Analysis Division, for announced new jobs and investment, NC tiers, and number of industrial buildings. <http://www.nccommerce.com/en>  
 NC Commerce, Division of Employment Security for lost jobs and affected establishments data and occupational data. <http://www.ncesc.com>  
 NC Dept. of Health & Human Services for childcare data. <http://www.ncdhhs.gov/>  
 UNC Sheps Center for healthcare provider statistics. <http://www.shepscenter.unc.edu/>  
 US Bureau of Labor Statistics for employment and unemployment, wages and establishments by industry. <http://www.bls.gov>

### Notes:

Data are the latest available at the date the profile was prepared. SAT scores use the new scoring system including a writing test for a perfect score of 2400 and represent county systems. ESRI 2010/2015 data are projections. Some data may be available only for North Carolina. For further details or questions, please check the Data Sources Guide at [https://edis.commerce.state.nc.us/docs/bibliography/Data\\_Sources\\_Guide.pdf](https://edis.commerce.state.nc.us/docs/bibliography/Data_Sources_Guide.pdf).



Prepared by North Carolina Department of Commerce, Division of Policy, Research & Strategic Planning, December 2010

**Legend**

- Hospital
- Public University
- Private University
- NC Community Colleges
- School
- Interstate
- US Highway
- State Highway
- Railroads (Local)
- Airport
- Rivers
- Cnty Bnds (detailed, named)
- Park
- Municipal Boundaries

